



**INSTRUCTION MANUAL  
FOR DOUBLE BARREL  
&  
CERTIFICATE OF WARRANTY**

**READ THE INSTRUCTIONS AND  
WARNINGS IN THIS MANUAL CAREFULLY  
BEFORE USING THIS FIREARM**

## SAFETY RULES

**1. RULE: ALWAYS KEEP THE MUZZLE POINTED IN A SAFE DIRECTION. NEVER POINT A FIREARM AT SOMETHING THAT IS NOT SAFE TO SHOOT!**

No one will be injured by an accidental discharge if you keep your firearm pointed in a safe direction. It's as simple as that.

**2. RULE: FIREARMS SHOULD BE UNLOADED WHEN NOT ACTUALLY IN USE.**

Remember, it is your responsibility to make sure that children and others unfamiliar with firearms cannot get access to your firearms and ammunition.

**3. RULE: DON'T RELY ON YOUR GUN'S SAFETY. SAFETY DEVICES ARE NOT A SUBSTITUTE FOR SAFE HANDLING PROCEDURES.**

**4. RULE: BE SURE OF YOUR TARGET AND WHAT'S BEYOND IT. NEVER SHOOT AT WATER OR AT A HARD SURFACE.**

Remember, bullets can travel great distances with tremendous velocity. Know how far your shot will go if you miss your target or the bullet ricochets. If you miss your target or if the bullet penetrates the target, it is your responsibility to ensure that the shot does not cause unintended injury or damage.

**5. RULE: USE PROPER AMMUNITION. ONLY USE FACTORY-LOADED, NEW AMMUNITION MANUFACTURED TO INDUSTRY SPECIFICATIONS: CIP (EUROPE AND ELSEWHERE), SAAMI (USA). BE CERTAIN THAT EACH ROUND YOU USE IS IN THE PROPER CALIBER OR GAUGE AND TYPE FOR THE PARTICULAR FIREARM.**

Every firearm is designed to use a certain caliber or gauge of ammunition. Using the wrong ammunition, mixing ammunition or using improperly reloaded ammunition can cause serious personal injury or death. And it only takes one cartridge or shotshell of the incorrect caliber or gauge, or which has been improperly reloaded to destroy your firearm.

Likewise, you'll find the caliber or gauge of your **BERIKA** firearm imprinted on the barrel.

### RELOADING REQUIRES EXTRA DILIGENCE

The first rule of reloading is to always follow the manufacturer's instructions for the components you're using.

Dangerously high pressure and explosions can result from an overcharge of powder, use of the wrong powder,

incorrect shot selection or other deviations from established reloading guidelines. Be very careful.

**6. RULE: LEAD WARNING**

Discharging firearms in poorly ventilated areas, cleaning firearms or handling ammunition may result in exposure to lead and other substances known to cause



birth defects, reproductive harm, and other serious physical injury. Have adequate ventilation at all times. Wash hands thoroughly after exposure (i.e. MAINTENANCE).

**7. RULE: IF YOUR GUN FAILS TO FIRE WHEN THE TRIGGER IS PULLED, HANDLE WITH CARE!**

**8. RULE: ALWAYS WEAR EYE AND EAR PROTECTION WHEN SHOOTING.**

**9. RULE: BE SURE THE BARRELS CLEAR OF OBSTRUCTIONS BEFORE SHOOTING.**

**10. RULE: DON'T ALTER OR MODIFY YOUR GUN AND HAVE IT SERVICED REGULARLY.**

Proper cleaning and lubrication are also important to firearm maintenance and are necessary to assure accuracy, safety and reliability.

Remember, you are responsible for the proper care and maintenance of your firearm. Failure to properly maintain your firearm can not only damage or ruin your firearm, it can expose you and others to unnecessary risks of personal injury or death.

There are a wide range of firearm care products and resources on the market to help you get the best results cleaning your gun. Everything from solvents and lubricants to rods and patches. They're all available from your dealer.

**11. RULE: LEARN THE MECHANICAL AND HANDLING CHARACTERISTICS OF THE FIREARM YOU ARE USING.**

Before you even unpack your new **BERIKA** firearm, read the instruction manual from cover to cover and familiarize yourself with the different component parts of the gun. Then read, understand and follow the 13 rules of safety in this booklet.

**12. RULE: SHOOT SOBER!**

Alcohol, drugs and guns are a deadly combination. Never consume anything that would even mildly impair your judgment or physical coordination when you're using a firearm. A staggering percentage of the shooting accidents that occur every year involve alcohol or drugs. Be smart. Shoot sober and stay alive.

**13. GENERAL RULE:**

Let common sense rule. Learn your official and unofficial responsibilities.

Please visit our web page for more details ;

[www.berika.com.tr](http://www.berika.com.tr)



## **INTRODUCTION TO BERIKA**

For many years, Berika has been associated with the gun industry. After the word with modern technology and you have a product of true value and affordable quality. You have Berika.

We at Berika thank you for the privilege of delivering a product to you that will provide you with years of pleasurable use. Happy shotgunning.

## **ABOUT YOUR DOUBLE BARREL SHOTGUN**

Berika double barrel shotguns take to the field with exceptional quality and classic style. These shotguns are designed with performance, reliability, and value at the forefront. Together with Berika's **THREE YEAR WARRANTY**, these guns come with standard features that increase functionality and give the characteristics of a truly impressive double barrel.

### **Standard Features**

- Solid Frame for Durability and Strength
- Sealed Actions to Keep Out Dirt
- Self-adjusting Locking Bolts
- Top Tang Barrel Selector and Safety
- Fiber Optic Front Sight
- Chrome-lined Barrels
- Cut Checkering
- Ventilated Rib

## **BE COURTEOUS**

When shooting or hunting always acquire the permission of the landowner. Respect the land. Do not litter, use gates when possible, leave open gates open and closed gates closed. Drive vehicles only where advance permission has been granted and always express gratitude for use of another person's land. Offer your labor or game as repayment for the privilege of use. Remember you are helping develop a reputation for all sportsmen/sportswomen.



## WARRANTY POLICY

Any Legitimate purchaser of a **BERIKA** gun is entitled, under the following conditions, to have it repaired free of charge (parts and labor) in the event of defects occurring that can be shown to be due to defective materials or manufacture.

This warranty is valid for three (3) years from the date of delivery of the product to its initial purchaser. The receiver is covered by a special warranty of ten (10) years from the date of delivery of the product to its initial purchaser. This warranty shall not cover wear and tear resulting from normal use of the gun or the coating of said receiver.

Under the terms of this warranty no other intervention will be accepted by **BERIKA** or its distributors and in particular no indemnity will be paid for loss of use.

This warranty excludes any breakage of the wooden elements where such breakage is not due to an intrinsic defect of the wood.

This warranty shall only apply if, within the aforementioned period of three (3) or ten (10) years, the purchaser of the gun hands back or returns the allegedly defective gun to an official **BERIKA** distributor at his/her own cost and risks within fifteen (15) days of said defect becoming apparent. The gun must be accompanied by a written description of the defect or defects and any other documents or cover establishing the place and date of the initial purchase (for example a copy of invoice).

### **This warranty will not apply where:**

1. It is apparent that the alleged defect can reasonably be attributed to normal wear and tear of the gun, intentional damage, negligent maintenance, storage or use or to improper use (such as unsuitable or reloaded ammunition)

2. The gun has been converted or altered in any way.

Under the terms of this warranty, all repairs or replacements shall be affected within a reasonable time scale.

All repairs, with or without replacement of parts, must be performed using the correct equipment by an official **BERIKA** distributor or **BERIKA** approved service center.

The customer will be advised when the repaired or replacement gun is ready. It will either be held for collection or, if the customer so requests, can be delivered to his home address at his own risk and cost.

Any servicing or repair work carried out under the terms of this warranty shall not extend the warranty period or alter the conditions thereof. However, the repair itself will be guaranteed for a period of one (1) year from the date the repaired gun becomes available.

In the event that the gun is replaced with a new one, the full warranty shall begin, to apply from the moment the replacement gun is handed to the customer.

Custom gunsmithing service or nonstandard alterations are NOT AVAILABLE from **BERIKA** factory.






**WARNING: Before shipping any firearm, be absolutely certain that it is unloaded. Do not ship cartridges with a firearm.**





## USAGE OF CHOKE TUBES

The choke is what controls the openness or tightness of the pattern of your shotgun. The chart below lists the choke available (from open to tight), and the corresponding marks that indicate the choke of your specific shotgun.

	SKEET	IC	M	IM	F
CHOKE TUBE					
BBLS	CL	★ ★ ★ ★	★ ★ ★	★ ★	★

Never fire or run gun cleaning tools through a barrel that uses choke tubes without having a choke tube installed. The threads of the choke tube and the internal threads of the barrel should be cleaned after each use and before installation of the tube.

To install a tube, insert the tube into the barrel and tighten with your fingers. Once the tube is finger tightened, tighten with the appropriate choke-tube wrench until the tube is snug. DO NOT over tighten or forcefully tighten with wrench.

## ASSEMBLY

Make sure there are no shells in the chamber.

1. Remove all dirt and excess oil from the gun, especially from the breech area, also barrel interior and ends.
2. Remove the forearm by pushing the forehead iron catch upwards. Allowing the nose of the forearm to release and pull it with the other hand at the same time to separate the forearm from the barrel. (Photos 1)



3. Lightly oil the already cleaned contact points. Attach barrels to action by grasping the grip of the stock with your right hand and placing the stock under your right arm. With your right thumb move the opening lever to the right. Now hold the barrels with your free hand and slide the barrels through the top of the receiver, with the barrels nose pointing down, until the hinge notch engages with the hinge pins. (Photos 2)



4. Keeping the hinge pin notch engaged with the hinge pin. lift the nose of the barrels until the action closes. Caution: If as you attempt to close the gun the barrels bind or don't seem to fit then the hinge pin and notch are not engaged. DO NOT FORCE, try again. Release the hinge pin and notch are the barrels will be locked in place.

5. Replace the forearm on the gun by sliding the rear of the forearm into the barrel at the same angle by which you removed it. The round rear of the forearm should match the round front of the receiver, lift the nose of the forearm until it engages with the barrels with an audible click. If it does not click, slap the forearm with the palm of your hand. If the forearm release latch protrudes after the click, gently push it in place. (Photos 3)



### **LOADING AND OPERATING YOUR SHOTGUN**

1. Slide the safety, located on the tang of the receiver, toward the butt of the gun into the "Safe" position. (Photo 4)

2. Break open the action.

3. Check the barrels for any obstructions, including dirt and excess oil. Caution: Obstructions can increase barrel pressure sufficiently so that the barrel can explode when the gun is fired. This may result in serious injury or death to the shooter and others in the vicinity.

4. Insert shot shells into the chamber or chambers you plan to fire. Caution: Make sure the shells are of the proper gauge and chamber length for your gun.

Berika arms is not responsible for damage to gun or shooter caused by malfunctioning ammunition, new, remanufactured, reloaded, or hand loaded.

5. Close the action.

6. The order in which the barrels are fired depends upon the type of trigger. With a single, non-selective trigger, the bottom barrel is fired first on an over/under shotgun. With a double trigger, the barrel for which you





shotgun. The back trigger fires top barrel on over/under shotgun. With a selective trigger, the user determines which barrel is fired first by selecting it with the selector button. Moving the button to the right selects the top barrel to fire first on an over / under shotgun. Moving the button to the left selects the bottom barrel to fire first on an over / under shotgun.

The back trigger fires the top barrel on an over/under shotgun. With a selective trigger, the user determines which barrel is fired first by selecting it with the selector button. Moving the button to the right selects the top barrel to fire first on an over / under shotgun. Moving the button to the left selects the bottom barrel to fire first on an over / under shotgun.

7. When contemplating firing your gun, be sure of your target, what is behind it, and the location of all persons with you or in your vicinity. Pick your target, release safety by sliding it forward with your thumb, and squeeze the trigger with your forefinger.

8. To unload, pers the opening lever to the right and open the action. Fired shells will be ejected and unfired shells will be elevated above the chamber on models with automatic selective ejectors. Models with extractors only will elevate both fired and unfired shells above the chamber.

Caution: In case of a misfire, wait at least 30 seconds while keeping the gun pointed in a safe direction. Then, carefully open the action away from yourself and others. If the primer or rim is indented, the shell should be discarded in a manner that would prevent accidental injury to you or others. If there is no indentation the primer or rim, your gun has malfunctioned and should be serviced by a qualified gunsmith. If the gun is under warranty it must be serviced by an Authorized Warranty Repair Station.

## **DISASSEMBLY**

1. Make sure the gun is unloaded and no shells are in the chambers.
2. Close the action. Place the gun butt on your thigh and remove the forearm by pulling the forearm release latch or pressing forearm release button. While pulling the nose of the forearm away from the barrels, slide the forearm forward until separated from the barrels.
3. Separate the barrels from the receiver by holding the stock of the gun in your right hand and the barrels in your left. Push the opening lever to the right with your thumb. Allow the nose of the barrels to drop and lift the barrels upward out of the receiver.
4. For over / under shotguns close the top lever by pressing on the button located in the action.





5. The gun can now be cleaned. The forearm should be reattached to the barrels for storage.

Caution: No further disassembly is needed, unless it is done by persons qualified in shotgun repair. Improper functioning and damage to the gun may result otherwise.

## **MAINTENANCE AND CLEANING**

Caution: Make sure the gun is unloaded.

1. Make sure that the broad, polished, finely fitted mating surfaces of the breech block and receiver are especially clean and lightly oiled with a high quality gun oil. Do not use pure silicone or lanolin.

2. Run an oil patch through the bore with a cleaning rod starting from the breech end. To prevent leading, use a cleaning solvent and brass brush to clean the bore periodically. Follow this cleaning with one or two clean oilpatches. Important: If your gun is equipped with choke tubes, do not use a brass brush to clean the barrels unless a choke tube is installed in each barrel. Barrels that utilize choke tubes must also have the choke tubes removed to clean and oil the threads inside the barrel and the choke tubes themselves. This will protect the threads from being damaged by cleaning tools and also prevent a dirt build up that would cause the choke tube to become difficult to remove from the barrel. Damage can result to choke tubes and barrel when attempting to remove sticky choke tubes.

Never fire your gun without choke tubes snugly tightened in barrels. Do not over tighten choke tubes. Wipe all exposed metal surfaces with an oiled cloth before storing. Do not squirt or pour oil into the inside mechanism because it may hamper proper functioning and will soak the wood. After extended periods of heavy use, your gun should be taken to a qualified gunsmith to have the action disassembled for professional cleaning and lubrication.

3. Care for your wood stock and forearm the same way you would a piece of furniture with the same finish.

## **STORAGE**

Clean thoroughly and oil your gun before storage. Store the gun in a case to prevent scratches and dents. Store in a dry place to prevent corrosion.



## **AMMUNITION**

All Berika over and under and side-by-side shotguns are designed and tested for the use of factory manufactured shotgun shells. Use shot shells of the proper gauge and chamber length as marked on the barrels. 3" chambers will handle all 3" and 2 3/4" shells. 2 3/4" chambers will handle 2 3/4" shells only.

## **IMPORTANT**

### **USAGE OF STEEL SHOT**

The choke (bore constriction) in all modern shotguns has been established based on the pattern performance of shot shells loaded with lead shot. When using the steel shot shells, you will notice a different performance in pattern density versus the established lead shot pattern, because the steel shot is harder and lighter than lead shot.

You should be aware of the following differences and cautions:

Never shoot steel shot loads in a full choked barrel or full choke tubed barrel. To do so may cause the barrel to swell or rupture. In general, steel shot fired with a modified choke will produce the equivalent of a lead full choke pattern. This will be true of all steel shot size up to and including no. 2. The established improved cylinder chokes will produce the equivalent of a (lead) modified choke pattern.

All steel shot sized larger than no. 2, and including special sized such as "F", "T" etc., should be used only with improved cylinder chokes. These steel shot sizes, when used in improved cylinder chokes, will produce patterns equivalent to (lead) full choke patterns. The established cylinder choke or bore will produce the equivalent of a modified (lead) pattern.

Additional information concerning the use of steel shot is available from Remington, Winchester, Federal and other ammunition companies.

## **SHIPPING**

When returning your gun for service, please take care in packing your gun. Be sure the gun is unloaded. Disassemble your gun, reattach the forearm to the barrels, wrap all parts in paper or other protective media, and place all parts of your gun in the original box (THIS BOX WILL PROTECT THE GUN BUT IS NOT DESIGNED FOR SHIPPING). Wrap the box in a cardboard box in a strength approved for interstate shipping. Berika arms is not responsible for damage incurred during shipping.

**Please ship the firearm prepaid to your dealer**

**PARTS** to order parts, please furnish the following: Your name, address, telephone number, serial number, make, and model.

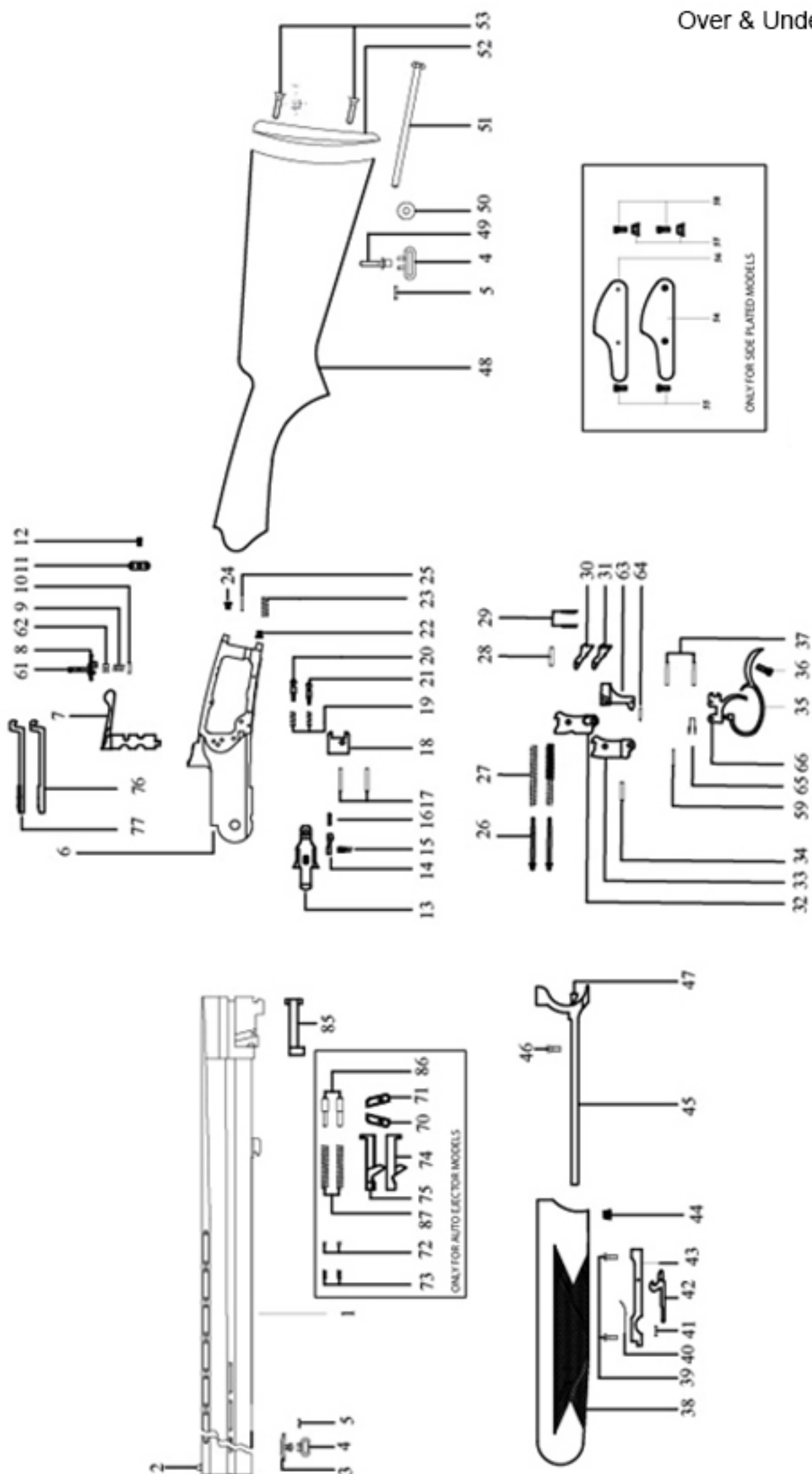
When we receive your request, we will send an order form and a parts breakdown with prices.





# SPARE PARTS

Over & Under Models





# SPARE PART LIST

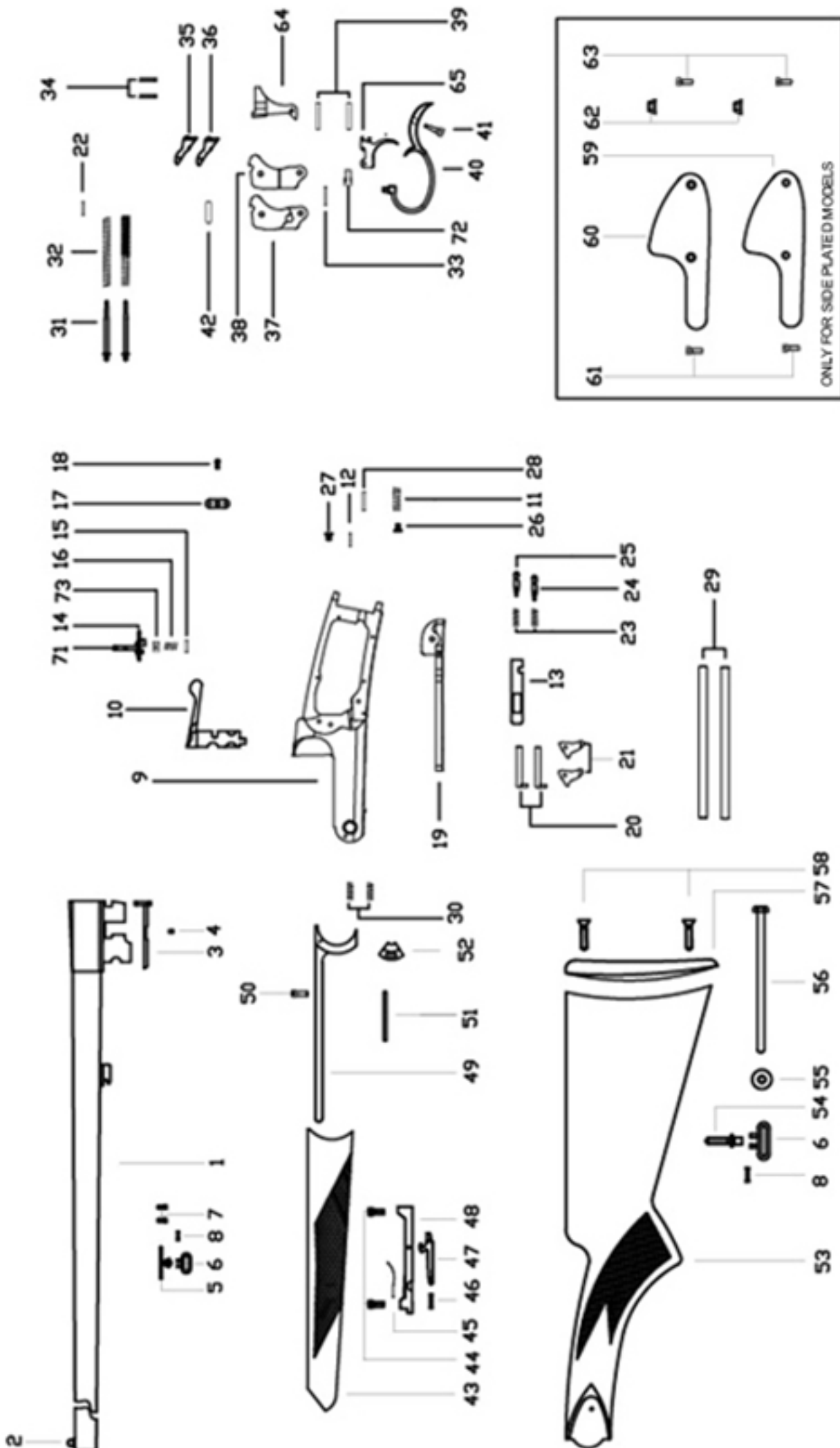
Over & Under Models

PNo.	PART NAME	PNo.	PART NAME	PNo.	PART NAME
1	NAMLU / BARREL	30	SAGIÇ TETİK / SEAR (RIGHT)	59	AÇMA KOLU SABİTLEME ÇİVİSİ / TOP LEVER PIN
2	ASPAK / FRONT BEAD	31	SOL IÇ TETİK / SEAR (LEFT)	60	KURMA KOLU / COCKING ARM
3	NAMLU GERDANESİ / BARREL SWIVEL STUD	32	SAG HOROZ / HAMMER (RIGHT)	61	SELEKTÖR / SAFETY LEVER
4	GERDANE HALKASI / SWIVEL	33	SOL HOROZ / HAMMER (LEFT)	62	EMNİYET YAYI / KAPAK / SAFETY WASHER
5	GERDANE SABİTLEME VİDASI / SWIVEL SCREW	34	HOROZ ÇİVİSİ / HAMMER PIN	63	AĞRIK / SELECTOR
6	KUBUZ / RECEIVER	35	TETİK MUHAFAZASI / TRIGGER GUARD	64	AĞRIK PİMİ / SELECTOR PIN
7	AÇMA KOLU / TOP LEVER	36	MUHAFAZA KUNDAK VİDASI / TRIGGER GUARD SCREW	65	TETİK YAYI / TRIGGER SPRING
8	EMNİYET / SAFETY	37	TETİK ÇİVİSİ / TRIGGER PIN	66	DIŞ TETİK / TRIGGER
9	EMNİYET YAYI / SAFETY SPRING	38	EL KUNDAGI / FOREARM	67	MAKARA / ROLLER
10	EMNİYET YAY PİMİ / SAFETY SPRING PIN	39	EL KUN. AÇMA KİLİTİ SAB. VİDASI / TAKE DOWN LATCH SCREW	68	MAKARA YAYI / ROLLER SPRING
11	HOROZ YAYI TAŞIYICI / HAMMER SPRING PLATE	40	EL KUN. AÇMA KİLİT YAYI / TAKE DOWN LATCH SPRING	69	MAKARA ÇİVİSİ / ROLLER PIN
12	HOROZ YAYI TAŞIYICI VİDASI / HAMMER SPRING PLATE SCREW	41	EL KUN. AÇMA KİLİT PİMİ / TAKE DOWN LATCH PIN	70	SAG KAMA / WEDGE (RIGHT)
13	ALT KAPAK / LOWER RECEIVER	42	EL KUN. AÇMA KOLU / TAKE DOWN LATCH	71	SOL KAMA / WEDGE (LEFT)
14	ALT KAPAK PİM / LOCKING BLOCK HOLDER	43	EL KUN. AÇMA KİLİT ÇİVİSİ / TAKE DOWN LATCH BRACKET	72	KAMA PİMİ / EJECTOR SEAR PIN
15	ALT KAPAK PİM YAYI / LOCKING BLOCK HOLDER SPRING	44	ZİMANA / ESCUTCHEON COVER SCREW	73	KAMA YAYI / EJECTOR SEAR SPRING
16	ALT KAPAK PİM ÇİVİSİ / LOCKING BLOCK HOLDER PIN	45	EL KUNDAGI METAL / FOREARM IRON	74	SAG E.K. TIRNAK / EJECTOR (RIGHT)
17	İÇNE PİMİ / FIRING PIN PNTLE	46	ZİMANA VİDASI / ESCUTCHEON SCREW	75	SOL E.K. TIRNAK / EJECTOR (LEFT)
18	KİLİT / LOCKING BLOCK	47	EL KUNDAGI KURMA KOLU / FOREARM COCKING ARM	76	SAG KURMA KOLU / COCKING ARM (RIGHT)
19	İÇNE YAYI / FIRING PIN SPRING	48	DİPÇİK / STOCK	77	SOL KURMA KOLU / COCKING ARM (LEFT)
20	ÜST İÇNE / FIRING PIN (TOP)	49	KUNDAK GERDANESİ / STOCK SWIVEL STUD	78	SAG TETİK / TRIGGER (RIGHT)
21	ALT İÇNE / FIRING PIN (BOTTOM)	50	SAPLAMA VİDASI PULU / STOCK BOLT WASHER	79	SOL TETİK / TRIGGER (LEFT)
22	AÇMA KOLU YAY PİMİ / TOP LEVER SPRING PIN	51	SAPLAMA VİDASI / STOCK BOLT	80	İÇNE DELİĞİ KAMA VİDASI / DAGGER
23	AÇMA KOLU YAYI / TOP LEVER SPRING	52	DİPÇİK LASTİĞİ / BUTT PLATE	81	İÇNE DELİĞİ KAMA VİDASI / DAGGER SCREW
24	AÇMA KOLU YAYI TAŞIYICI / TOP LEVER SPRING RETAINER	53	DİPÇİK VİDASI / BUTT PLATE SCREW	82	İÇ TETİK KALDIRAÇ / SEAR LEVER
25	AÇMA KOLU YAYI SABİTLEME ÇİVİSİ / TOP LEVER SPRING RETAINING PIN	54	SOL KAPAK / SIDE PLATE (LEFT)	83	EMNİYET ÇİVİSİ / SAFETY PIN
26	HOROZ YAYI ÇİVİSİ / HAMMER SPRING PIN	55	KAPAK VİDASI / SIDE PLATE SCREW	84	İÇ TETİK KALDIRAÇ PİMİ / SEAR LEVER PIN
27	HOROZ YAYI / HAMMER SPRING	56	SAG KAPAK / SIDE PLATE (RIGHT)	85	TIRNAK / EXTRACTOR
28	İÇ TETİK ÇİVİSİ / SEAR PIN	57	KAPAK ZİMANASI / SIDE PLATE ESCUTCHEON COVER SCREW	86	E.K. TIRNAK YAY PİMİ / EJECTOR SPRING PIN
29	İÇ TETİK YAYI / SEAR SPRING	58	KAPAK KUNDAK VİDASI / SIDE PLATE COVER SCREW	87	E.K. TIRNAK YAYI / EJECTOR SPRING



# SPARE PARTS

Side by Side Models



# SPARE PART LIST

Side by Side Models

P.No.	PART NAME	P.No.	PART NAME	P.No.	PART NAME	P.No.	PART NAME
1	NAMU / BARREL	26	AÇMA KOLU WYTAPISI / TOP LEVER SPRING PLUNGER	51	TIRNAK ÇERİPİM / FOREARM COOKING ARM PIN	76	İÇE MENESİ / CROWN
2	ARPAÇ / FRONT ISBA	27	AÇMA KOLU WYTAPISI / TOP LEVER SPRING RETAINER	52	TIRNAK ÇERİPİM / FOREARM COOKING ARM	77	MANDAL VIDASI / TANG SCREW
3	TIRNAK / EXTRACTION	28	AÇMA KOLU SABİTLEME PİMİ / TOP LEVER LOCKING PIN	53	DİPÇİK / STOCK	78	BODY VIDASI / LOWER RECEIVER REAR SCREW
4	TIRNAK VIDASI / EXTRACTOR SCREW	29	KURMA KOLU / COOKING ARM	54	KURMAK GERDANESİ / STOCK SWIVEL STUD	79	İÇ BAKİT SABİTLEME ÇİMSİ / SAFETY INTERIOR PIN
5	NAMU GERDANESİ / BARREL SWIVEL STUD	30	KURMA KOLU WYTAPISI / COOKING ARM SPRING	55	SAPLAMA VIDASI PULU / STOCK BOOT WASHER	80	İÇ BAKİT / SAFETY INTERIOR
6	GERDANE HALKASI / SWIVEL	31	HORJZ WYTAPISI / HAMMER SPRING PIN	56	SAPLAMA VIDASI STOCK BOLT	81	SOL DİŞ HORJZ / HAMMER (LEFT)
7	GERDANE SABİTLEME VIDASI / BARREL SWIVEL STUD SCREW	32	HORJZ WYTAPISI / HAMMER SPRING	57	DİPÇİK LASTİĞİ / BUTT PLATE	82	SAG DİŞ HORJZ / HAMMER (RIGHT)
8	GERDANE HALKASI / SWIVEL SCREW	33	HORJZ PİMİ / HAMMER PIN	58	DİPÇİK VIDASI / BUTT PLATE SCREW	83	HORJZ DİŞ VIDASI / HAMMER SCREW
9	KURMA / RECEIVER	34	İÇ TETİK WYTAPISI / SEAR SELECTOR SPRING	59	SOL KAPAK / SIDE PLATE (LEFT)	84	SOL HORJZ WYTAPISI / HAMMER SPRING (LEFT)
10	AÇMA KOLU / TOP LEVER	35	SAG İÇ TETİK / SEAR (RIGHT)	60	SAG KAPAK / SIDE PLATE (RIGHT)	85	SAG HORJZ WYTAPISI / HAMMER SPRING (RIGHT)
11	AÇMA KOLU WYTAPISI / TOP LEVER SPRING	36	SOL İÇ TETİK / SEAR (LEFT)	61	KAPAK VIDASI / SIDE PLATE SCREW	86	SOL İÇ HORJZ AĞISI / HOLDER (LEFT)
12	AÇMA KOLU WYTAPISI PİMİ / TOP LEVER SPRING RETAINER PIN	37	SOL HORJZ / HAMMER (LEFT)	62	KAPAK ZİMMESİ / SIDE PLATE ESCUTCHION COVER SCREW	87	SAG İÇ HORJZ AĞISI / HOLDER (RIGHT)
13	KÜT / LOCKING BLOCK	38	SAG HORJZ / HAMMER (RIGHT)	63	KAPAK KUNDAK VIDASI / SIDE PLATE COVER SCREW	88	KAPAK SABİTLEME VIDASI / PLATE MINIALIZATION SCREW
14	EMNİYET / SAFETY	39	TETİK SABİTLEME ÇİMSİ / TRIGGER PIN	64	AĞIRLIK / SELECTOR	89	SOL TULUMBASI / PUMP (LEFT)
15	EMNİYET WYTAPISI / SAFETY SPRING PIN	40	TETİK MÜHÜRİ / TRIGGER GUARD	65	DİŞ TETİK / TRIGGER	90	SAG TULUMBASI / PUMP (RIGHT)
16	EMNİYET WYTAPISI / SAFETY SPRING	41	TETİK MÜHÜRİ VIDASI / TRIGGER GUARD SCREW	66	EMNİYET PİMİ / SAFETY PIN	91	HORJZ WYTAPISI / HAMMER SPRING CONTRA SCREW
17	HORJZ WYTAPISI / HAMMER SPRING PLATE	42	İÇ TETİK PİMİ / SEAR PIN	67	İÇ TETİK KUNDAK / SEAR LEVER	92	SOL ÇAMAK / SIDE LOCK (LEFT)
18	HORJZ WYTAPISI VIDASI / HAMMER SPRING PLATE SCREW	43	EL KUNDAKI / FOREARM	68	İÇ TETİK KUNDAK PİMİ / SEAR LEVER PIN	93	SAG ÇAMAK / SIDE LOCK (RIGHT)
19	ALT KAPAK / LOWER RECEIVER	44	EL KUNAK MAKİNESİ / TAKE DOWN LATCH SCREW	69	SAG DİŞ TETİK / TRIGGER (RIGHT)	94	BASKI İÇ TETİK VIDASI / RESISTANT SEAR SCREW
20	KURMA KOLU DİŞ PİCİ / COOKING ARM CARRIERS	45	EL KUNAK MAKİNESİ / TAKE DOWN LATCH SPRING	70	SOL DİŞ TETİK / TRIGGER (LEFT)	95	SOL BASKI / RESISTANT (LEFT)
21	KURMA KOLU MANİTLESİ / COOKING ARM LEVER	46	EL KUNAK MAKİNESİ PİMİ / TAKE DOWN LATCH PIN	71	SELEKTÖR / SAFETY LEVER	96	SAG BASKI / RESISTANT (RIGHT)
22	İÇE SABİTLEME PİMİ / FIRING PIN PINTLE	47	EL KUNAK MAKİNESİ / TAKE DOWN LATCH	72	TETİK WYTAPISI / TRIGGER SPRING	97	SOL İÇ TETİK / SEAR (LEFT)
23	İÇE WYTAPISI / FIRING PIN SPRING	48	EL KUNAK MAKİNESİ / TAKE DOWN LATCH BAKİT	73	EMNİYET SAKI / SAFETY WASHER	98	SAG İÇ TETİK / SEAR (RIGHT)
24	SOL İÇE / FIRING PIN (LEFT)	49	EL KUNDAKI METAL / FOREARM IRON	74	ALT KAPAK VIDASI / LOWER RECEIVER PIN	99	SOL İÇ TETİK WYTAPISI / SEAR SELECTOR SPRING (LEFT)
25	SAG İÇE / FIRING PIN (RIGHT)	50	EL KUNDAKI SABİTLEME VIDASI / ESCUTCHION SCREW	75	EMNİYET WYTAPISI / SAFETY SPRING PIN	100	SAG İÇ TETİK WYTAPISI / SEAR SELECTOR SPRING (RIGHT)





## THANK YOU

Thank you for purchasing a Berika shotgun. We are sure this gun will bring you years of hunting and/or shooting pleasure. Your satisfaction is the key to our success.

Please let us know if we can be of service and please relay any observations about your gun's performance or appearance.

### *PRODUCT ID.*

Type	:	
Brand	:	BERIKA
Serial Nr.	:	
Model	:	
Barrel length	:	
Caliber	:	
Date and Place of Delivery	:	
Maximum period of free repair	:	30 days
Guarantee period	:	

*Seller Company*

.....

*Date and Number of the Invoice*

.../.../.... ..

*Signature - Seal*

--



## BE COURTEOUS

When shooting or hunting always acquire the permission of the landowner. Respect the land. Do not litter, use gates when possible, leave open and closed gates closed. Drive vehicles only where advance permission has been granted any always express gratitude for use of another persons land. Offer your labor or game as repayment for the privilege of use. Remember you are helping develop a reputation for all sportsmen/sportswomen.



Tahıl pazarı Mah.Şarampol  
Cad.Tugayoğlu İş Merkezi Kat:3  
No:15 Muratpaşa/Antalya/TURKEY  
Tel : +90 242 408 0880  
[www.berika.com.tr](http://www.berika.com.tr)