



**STRAIGHT PULL EXT12
INSTRUCTION MANUAL
&
CERTIFICATE OF WARRANTY**

**READ THE INSTRUCTIONS AND
WARNINGS IN THIS MANUAL CAREFULLY
BEFORE USING THIS FIREARM**

SAFETY RULES

1. RULE: ALWAYS KEEP THE MUZZLE POINTED IN A SAFE DIRECTION. NEVER POINT A FIREARM AT SOMETHING THAT IS NOT SAFE TO SHOOT!

No one will be injured by an accidental discharge if you keep your firearm pointed in a safe direction. It's as simple as that.

2. RULE: FIREARMS SHOULD BE UNLOADED WHEN NOT ACTUALLY IN USE.

Remember, it is your responsibility to make sure that children and others unfamiliar with firearms cannot get access to your firearms and ammunition.

3. RULE: DON'T RELY ON YOUR GUN'S SAFETY. SAFETY DEVICES ARE NOT A SUBSTITUTE FOR SAFE HANDLING PROCEDURES.

4. RULE: BE SURE OF YOUR TARGET AND WHAT'S BEYOND IT. NEVER SHOOT AT WATER OR AT A HARD SURFACE.

Remember, bullets can travel great distances with tremendous velocity. Know how far your shot will go if you miss your target or the bullet ricochets. If you miss your target or if the bullet penetrates the target, it is your responsibility to ensure that the shot does not cause unintended injury or damage.

5. RULE: USE PROPER AMMUNITION. ONLY USE FACTORY-LOADED, NEW AMMUNITION MANUFACTURED TO INDUSTRY SPECIFICATIONS: CIP (EUROPE AND ELSEWHERE), SAAMI (USA). BE CERTAIN THAT EACH ROUND YOU USE IS IN THE PROPER CALIBER OR GAUGE AND TYPE FOR THE PARTICULAR FIREARM.

Every firearm is designed to use a certain caliber or gauge of ammunition. Using the wrong ammunition, mixing ammunition or using improperly reloaded ammunition can cause serious personal injury or death. And it only takes one cartridge or shotshell of the incorrect caliber or gauge, or which has been improperly reloaded to destroy your firearm.

Likewise, you'll find the caliber or gauge of your BERIKA® firearm imprinted on the barrel.

RELOADING REQUIRES EXTRA DILIGENCE.

The first rule of reloading is to always follow the manufacturer's instructions for the components you're using. Dangerously high pressure and explosions can result from an overcharge of powder, use of the wrong powder, incorrect shot selection or other deviations from established reloading guidelines. Be very careful.

6. RULE: LEAD WARNING

Discharging firearms in poorly ventilated areas, cleaning firearms or handling ammunition may result in exposure to lead and other substances known to cause birth defects, reproductive harm, and other serious physical injury. Have adequate ventilation at all times. Wash hands thoroughly after exposure (i.e. MAINTENANCE).

SAFETY RULES

7. RULE: IF OUR GUN FAILS TO FIRE WHEN THE TRIGGER IS PULLED, HANDLE WITH CARE!

8. RULE: ALWAYS WEAR EYE AND EAR PROTECTION WHEN SHOOTING.

9. RULE: BE SURE THE BARRELS CLEAR OF OBSTRUCTIONS BEFORE SHOOTING.

10. RULE: DON'T TINKER OR MODIFY YOUR GUN AND HAVE IT SERVICED REGULARLY.

Proper cleaning and lubrication are also important to firearm maintenance and are necessary to assure accuracy, safety and reliability.

Remember, you are responsible for the proper care and maintenance of your firearm. Failure to properly maintain your firearm can not only damage or ruin your firearm, it can expose you and others to unnecessary risks of personal injury or death.

There are a wide range of firearm care products and resources on the market to help you get the best results cleaning your gun. Everything from solvents and lubricants to rods and patches. They're all available from your dealer.

11. RULE: LEARN THE MECHANICAL AND HANDLING CHARACTERISTICS THE FIREARM YOU ARE USING.

Before you even unpack your new BERIKA® firearm, read the instruction manual from cover to cover and familiarize yourself with the different component parts of the gun. Then read, understand and follow the 13 rules of safety in this booklet.

12. RULE: SHOOT SOBER!

Alcohol, drugs and guns are a deadly combination. Never consume anything that would even mildly impair your judgment or physical coordination when you're using a firearm. A staggering percentage of the shooting accidents that occur every year involve alcohol or drugs. Be smart. Shoot sober and stay alive.

13. GENERAL RULE:

Let common sense rule. Learn your official and unofficial responsibilities. Please visit our web page for further details of Safety Rules;

www.berika.com.tr

INTRODUCTION TO BERIKA®

For many years, Berika® has been associated with the gun industry. After the word with modern technology and you have a product of true value and affordable quality. You have Berika®.

We at Berika® thank you for the privilege of delivering a product to you that will provide you with years of pleasurable use. Happy shotgunning.

ABOUT YOUR STRAIGHT PULL SHOTGUN

Your Berika® shotgun is Manual operated. The charging handle is operates the action.

Once the first shell has been fired, the next shell in the magazine will manually cycle into the chamber, and this cycle will continue (each time the charge handle is pulled) until all shells loaded in the magazine have been fired. The bolt will remain locked in the open position after the last shell is fired.

The EXT12 MK2 Straight Pull shotgun has fully aluminium receiver. Its straight pull design allows you to simply pull the bolt handle backwards for fast ejection of spent shells, quick reloading from the tube magazine, and re-cocking of the firing pin. Once you let go of the bolt handle, it feeds the next round into the chamber ready to be fired with ambidextrous bolt handle.

This and other fine features ensure that your shotgun will be a source of pride and pleasure for years to come. For 3 1/2" models the metering system allows you to shoot heavy 2 3/4" and 3 1/2" shells interchangeably.

ABOUT YOUR STRAIGHT PULL SYSTEM SHOTGUN

Berika® straight pull is the original version of the best manual operating system ever devised. The proven system is;

No adjusting, Consistent, reliable cycling, year after year, Handles light field loads to 3-1/2-inch magnums

The large bolt handle is located close to the rear enabling effortless cycling for users of all sizes. Additionally the bolt handle can be mounted on either side of the firearm making it truly ambidextrous. The energy absorbing one-piece synthetic stock and pistol grip has been carefully proportioned to suit the demands of a multitude of competitive shotgun disciplines.

BE COURTEOUS

When shooting or hunting always acquire the permission of the landowner. Respect the land. Do not litter, use gates when possible, leave open gates open and closed gates closed. Drive vehicles only where advance permission has been granted and always express gratitude for use of another person's land. Offer your labor or name as repayment for the privilege of use. Remember you are helping

ASSEMBLING



- 1- Take off the pins after slowly hit with the hammer
- 2- Push the trigger set forward and then pull back up to remove.



- 3- Loosen the screw in front of the forend to the reverse of clock direction and take off.
- 4- Dismantle the forend by pulling forward to the barrel end.



- 5- Before remove the barrel from the receiver, please take the ring out.
- 6- Dismantle the barrel by pulling forward to the barrel end.



- 7- Turn the screw with an allen key and then remove the sight.
- 8- You can remove it easily by pulling it up.

SAFETY



9



10

9- Push the bolt release button on the right side of the receiver. Mechanism will slide strongly forward. **WARNING!!** Be careful not to place your hand thru the way of the meehanism while sliding. Keep your hand as seen in the figure.

10- Make your shotgun safe by pushing the safety on the trigger guide on the left side. Be sure that the RED colour is not seen.

LOADING



11



12

11- Replace the cartridges as the metal end has to be backward in to magazine by pushing inside the carrier till hearing the locking click or till the cartridge is not seen.

Repeat the operation up to magazine capacity. Take care to replace suitable cartridges according to its chamber 70mm(2" 3/4) or 76mm(3"). You can see this specification on left side of your barrel and in the owners manual. Please do not use magnum ammunition if your shotgun is not 76mm(3") chambered.

12- After filling the magazine pull the charge lever to load it for firing.

USAGE



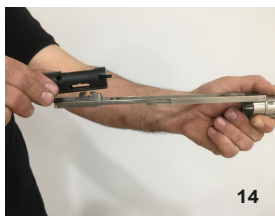
13

13- Pull the bolt handle back. Meehanism will be kept at the back. Push the bolt release button as seen in figure 9. While the bolt is sliding forward strongly carrier will let the cartridge in front of the bolt and the bolt will lock the cartridge in the chamber. Do not catch the bolt handle while sliding forward. Unless the locking will not be done. One cartridge of the magazine capacity is chambered now. You can now replace another cartridge in to the magazine instead of Chambered one. Thus the capacity of your shotgun will be filled.

(5+1) Open the safety lateh by pushing from the right side. You will see the red colour. Take care not to pull the trigger during this time. Now your shotgun is ready to fire. When you fire, your shotgun needs to be recharge manually to throw out the fired cartridge and replace one from the magazine

MAINTENANCE AND CLEANING

Caution : Make sure the gun is unloaded.



14 -Dismantle the parts as it shows on the picture by pulling to the forward.



15 -Place it back after cleaning.



16- Clean the inside and the out side with the same method. Take care to keep reverse the open sides of the rings.



17- Clean inside of the barrel with a ramrod Keep quite oiled the cleaned surfaces.

To assemble your shotgun again, please follow the steps on the disassembling page.

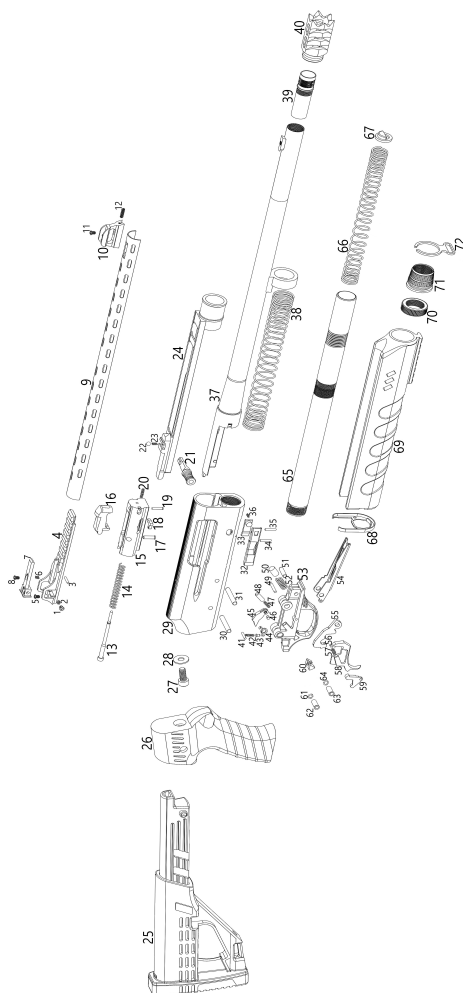
- Out of this your shotgun will not need more maintenance as user.
- If you need further detailed maintenance or repair get an authorised service
- Shoot your shotgun cleaning the protective lubricant.

Never fire your gun with out choke tubes snugly tightened in barrels. Do not over tighten choke tubes. Wipe all exposed metal surfaces with an oiled cloth before storing. Do not squirt or pour oil into the inside mechanism because it may hamper proper functioning and will soak the wood. After extended periods of the action disassembled for professional cleaning and lubrication.

Care for your wood stock and forearm the same way you would do a finish of furniture with the same finish.

SPARE PARTS

EXT12 STRAIGHT PULL



EXT-12
STRAIGHT PULL

1	Back sight adjustment screw	37	Barrel
2	Back sight adjustment spring	38	Installation spring
3	Back sight pin	39	Choke tube
4	Back sight	40	Muzzle Break
5	Back sight fixing screw	41	Railing pin
6	Back sight spring	42	Safety spring
7	Back sight adjustment part	43	Safety pin
8	Back sight adjustment part screw	44	Trigger spring
9	Cooling plate	45	Spoon lifting part
10	Front sight	46	Spoon lifting part pin
11	Front sight fixing screw	47	Spoon spring
12	Front sight fixing screw 2	48	Spoon spring lid
13	Firing pin	49	Railing pin 2
14	Firing pin spring	50	Hammer cap
15	Bolt body	51	Railing pin 3
16	Locking block	52	Hammer spring
17	Pin, firing pin retaining	53	Railing
18	Extractor	54	spoon
19	Pin, extractor retaining	55	Hammer
20	Extractor spring	56	Internal trigger cap
21	Setup handle	57	Internal trigger spring
22	Setup handle ball	58	Trigger
23	Slide arm spring	59	Internal trigger
24	Slide arm	60	Safety
25	Back stock	61	Back, Railing pin ring
26	Grip	62	Back, Railing pin tube
27	Case screw	63	Front, Railing pin tube
28	Case stamp 2	64	Front, Railing pin ring
29	Case	65	Magazine tube
30	Case back pin	66	Magazine tube spring
31	Case front pin	67	Magazine tube cap
32	Button steel sheet	68	Forearm cap
33	Button	69	Forearm
34	Button sheet pin	70	Forearm first nut
35	Button case pin	71	Forearm second nut
36	Button spring	72	Front Belting

CHOKE TUBES USAGE

ASSEMBLING CHOKE TUBES

In multi choke models please take care not to shoot without the choke tubes supplied with your shotgun. Choke tubes provide the shots to go out of the barrel messy or dense according to your hunt choice.

Choke tubes are numerated with small notches. Shots go more messy out of the barrel according to this choke numbers from smaller to bigger. The table given below will be helpful for usage. While replacing the choke tubes, take the notched end will be upside.



In multi choke models replace the choke tubes given together with your shotgun as the notched end must be upper side. Replace the choke tubes to the barrel by using choke key. Do not shoot without choke tubes in multi choke models. The choke notches must be upwards. After shooting dismantle tubes with key given end clean the tubes and choke the wedge inside the magazine.



THE DEFINITION AND USAGE OF CHOKE TUBES

TS 870	PATTERN WITH LEAD SHOT		PATTERN WITH STEEL SHOT	MARK	BEST IN THE AREA OF
4/4	★	FULL	Not Recommended	○	Waterfowling
3/4	★ ★	IMP MOD	FULL	○	Waterfowling
2/4	★ ★ ★	MOD	IMP MOD	○	Waterfowling (Hunting of Rabbit, partridge etc.)
1/4	★ ★ ★ ★	IMP CYL	MOD	○	Waterfowling (Hunting of quail, partridge, wood pigeon, woodcock)
Cylinder	★ ★ ★ ★ ★	CYL	IMP CYL	○	Waterfowling (Hunting of big game by using slug shots and partridge etc.)

SYMBOLS

IC Improved Cylinder, M. Modified Choke, IM Improved Modified Choke, F Full Choke, * Choke Types are identified by index marks cut in the muzzle and of tubes as shown in the fourth column.

STORAGE

Clean thoroughly and oil your gun before storage. Store the gun in a case to prevent scratches and dents. Store in a dry place to prevent corrosion.

WARRANTY POLICY

Any Legitimate purchaser of a **BERIKA®** gun is entitled, under the following conditions, to have it repaired free of charge (parts and labor) in the event of defects occurring that can be shown to be due to defective materials or manufacture.

This warranty is valid for two(2) years from the date of delivery of the product to its initial purchaser. The receiver is covered by a special warranty of ten (10) years from the date of delivery of the product to its initial purchaser. This warranty shall not cover wear and tear resulting from normal use of the gun or the coating of said receiver.

Under the terms of this warranty no other intervention will be accepted by **BERIKA®** or its distributors and in particular no indemnity will be paid for loss of use.

This warranty excludes any breakage of the wooden elements where such breakage is not due to an intrinsic defect of the wood.

This warranty shall only apply if, within the aforementioned period of three (3) or ten (10) years, the purchaser of the gun hands back or returns the allegedly defective gun to an official **BERIKA®** distributor at his/her own cost and risks within fifteen (15) days of said defect becoming apparent. The gun must be accompanied by a written description of the defect or defects and any other documents or cover establishing the place and date of the initial purchase (for example a copy of invoice).

This warranty will not apply where:

1. It is apparent that the alleged defect can reasonably be attributed to normal wear and tear of the gun, intentional damage, negligent maintenance, storage or use or to improper use (such as unsuitable or reloaded ammunition)

2. The gun has been converted or altered in any way.

Under the terms of this warranty, all repairs or replacements shall be affected within a reasonable time scale.

All repairs, with or without replacement of parts, must be performed using the correct equipment by an official **BERIKA®** distributor or **BERIKA®** approved service center.

The customer will be advised when the repaired or replacement gun is ready. It will either be held for collection or, if the customer so requests, can be delivered to his home address at his own risk and cost.

Any servicing or repair work carried out under the terms of this warranty shall not extend the warranty period or alter the conditions thereof. However, the repair itself will be guaranteed for a period of one (1) year from the date the repaired gun becomes available.

In the event that the gun is replaced with a new one, the full warranty shall begin, to apply from the moment the replacement gun is handed to the customer.

Custom gunsmithing service or nonstandard alterations are NOT AVAILABLE from **BERIKA®** factory.

WARNING: Before shipping any firearm, be absolutely certain that it is unloaded. Do not ship cartridges with a firearm.

THANK YOU

Thank you for purchasing a Berika® shotgun. We are sure this gun will bring you years of hunting and or shooting pleasure. Your satisfaction is the key to our success. Please let us know if we can be of service and relay any observations about your guns performance or appearance.

PRODUCT ID.

Type	:
Brand	: BERIKA®
Serial Nr.	:
Model	:
Barrel Lenght	:
Caliber	:
Date and Pleace Of Delivery	:
Maximum Period of Free Repair	: 30 days
Guarantee Period	: 2 (Two Years)

Seller Company

.....
Date and Number of the Invoice

...../...../.....
Signature - Seal

--

BE COURTEOUS

When shooting or hunting always acquire the permission of the land owner. Respect the land. Do not litter, use gates when possible, leave open and closed gates closed. Drive vehicles only where advance permission has been granted any always express gratitude for use of another persons land. Offer your labor or game as repayment for the privilege of use. Remember you are helping develop a reputation for all sportsmen / sportswomen.



ARMAS SİLAH SANAYİ VE DIŞ TİCARET

Tahıl pazarı Mah. Şaraplı Cad.

Tugayolu İş Merkezi Kat:3

No:15 Muratpaşa / Antalya / TURKEY

Tel: +90 242 408 08 80

www.berika.com.tr