



**BLACK OPS / DESERT STORM / NAVY SEAL
INSTRUCTION MANUAL
&
CERTIFICATE OF WARRANTY**

**READ THE INSTRUCTIONS AND
WARNINGS IN THIS MANUAL CAREFULLY
BEFORE USING THIS FIREARM**

SAFETY RULES

1. RULE: ALWAYS KEEP THE MUZZLE POINTED IN A SAFE DIRECTION. NEVER POINT A FIREARM AT SOMETHING THAT IS NOT SAFE TO SHOOT!

No one will be injured by an accidental discharge if you keep your firearm pointed in a safe direction. It's as simple as that. .

2. RULE: FIREARMS SHOULD BE UNLOADED WHEN NOT ACTUALLY IN USE.

Remember, it is your responsibility to make sure that children and others unfamiliar with firearms cannot get access to your firearms and ammunition.

3. RULE: DON'T RELY ON YOUR GUN'S SAFETY. SAFETY DEVICES ARE NOT A SUBSTITUTE FOR SAFE HANDLING PROCEDURES.

4. RULE: BE SURE OF YOUR TARGET AND WHAT'S BEYOND IT. NEVER SHOOT AT WATER OR AT A HARD SURFACE.

Remember, bullets can travel great distances with tremendous velocity. Know how far your shot will go if you miss your target or the bullet ricochets. If you miss your target or if the bullet penetrates the target, it is your responsibility to ensure that the shot does not cause unintended injury or damage.

5. RULE: USE PROPER AMMUNITION. ONLY USE FACTORY-LOADED, NEW AMMUNITION MANUFACTURED TO INDUSTRY SPECIFICATIONS: CIP (EURO-PE AND ELSEWHERE), SAAMI (USA). BE CERTAIN THAT EACH ROUND YOU USE IS IN THE PROPER CALIBER OR GAUGE AND TYPE FOR THE PARTICULAR FIREARM.

Every firearm is designed to use a certain caliber or gauge of ammunition. Using the wrong ammunition, mixing ammunition or using improperly reloaded ammunition can cause serious personal injury or death. And it only takes one cartridge or shots-hell of the incorrect caliber or gauge, or which has been improperly reloaded to destroy your firearm.

Likewise, you'll find the caliber or gauge of your BERIKA® firearm imprinted on the barrel.

RELOADING REQUIRES EXTRA DILIGENCE

The first rule of reloading is to always follow the manufacturer's instructions for the components you're using.

Dangerously high pressure and explosions can result from an overcharge of powder, use of the wrong powder,

incorrect shot selection or other deviations from established reloading guidelines. Be very careful. refül.

6. RULE: LEAD WARNING

Discharging firearms in poorly ventilated areas, cleaning firearms or handling ammunition may result in exposure to lead and other substances known to cause birth defects, reproductive harm, and other serious physical injury. Have adequate ventilation at all times. Wash hands thoroughly after exposure (i.e. MAINTENANCE).

7. RULE: IF YOUR GUN FAILS TO FIRE WHEN THE TRIGGER IS PULLED, HANDLE WITH CARE!

8. RULE: ALWAYS WEAR EYE AND EAR PROTECTION WHEN SHOOTING.

9. RULE: BE SURE THE BARRELS CLEAR OF OBSTRUCTIONS BEFORE SHOOTING.

10. RULE: DON'T ALTER OR MODIFY YOUR GUN AND HAVE IT SERVICED REGULARLY.

Proper cleaning and lubrication are also important to firearm maintenance and are necessary to assure accuracy, safety and reliability.

Remember, you are responsible for the proper care and maintenance of your firearm. Failure to properly maintain your firearm can not only damage or ruin your firearm, it can expose you and others to unnecessary risks of personal injury or death.

There are a wide range of firearm care products and resources on the market to help you get the best results cleaning your gun. Everything from solvents and lubricants to rods and patches. They're all available from your dealer.

11. RULE: LEARN THE MECHANICAL AND HANDLING CHARACTERISTICS OF THE FIREARM YOU ARE USING.

Before you even unpack your new **BERIKA®** firearm, read the instruction manual from cover to cover and familiarize yourself with the different component parts of the gun. Then read, understand and follow the 13 rules of safety in this booklet.

12. RULE: SHOOT SOBER!

Alcohol, drugs and guns are a deadly combination. Never consume anything that would even mildly impair your judgment or physical coordination when you're using a firearm. A staggering percentage of the shooting accidents that occur every year involve alcohol or drugs. Be smart. Shoot sober and stay alive.

13. GENERAL RULE:

Let common sense rule. Learn your official and unofficial responsibilities.

Please visit our web page for more details ;

www.berika.com.tr

INTRODUCTION TO BERIKA

For many years, Berika has been associated with the gun industry. After the word with modern technology and you have a product of true value and affordable quality. You have Berika®.

We at Berika® thank you for the privilege of delivering a product to you that will provide you with years of pleasurable use. Happy shotgunning.

ABOUT YOUR STRAIGHT PULL SHOTGUN

Your Berika shotgun is Manual operated. The charging handle is operated the action.

Once the first shell has been fired, the next shell in the magazine will manually cycle into the chamber, and this cycle will continue (each time the charge handle is pulled) until all shells loaded in the magazine have been fired.

The Black Ops magazine fed Straight Pull shotgun has fully aluminium patented® upper and lower receiver. One of the most important feature is whole trigger set can be remove by taking out two pins with your hands. So once you are finish your job with your gun you can remove the trigger set for your family safety.

This and other fine feratures ensure that your shotgun will be a source of pride and pleasure for years to come. For 3 1/2" models the metering system allows you to shott heavy 2 3/4" , "and 3 1/2" : shells interchangeably.

ABOUT YOUR STRAIGHT PULL SYSTEM SHOTGUN

Berika straight pull is the original version of the best operating system ever devised. The proven system is

No adjusting, Consistent, reliable cycling, year after year, Handles light field loads to 3-1/2- inch magnums

The large bolt handle is located close to the rear enabling effortless cycling for users of all sizes. Additionally the bolt handle can be mounted on either side of the firearm making it truly ambidextrous. The energy absorbing one-piece synthetic stock and pistol grip has been carefully proportioned to suit the demands of a multitude of competitive shotgun disciplines.

BE COURTEOUS

When shooting or hunting always acquire the permission of the landowner. Respect the land. Do not litter, use gates when possible, leave open gates open and closed gates closed. Drive vehicles only where advance permission has been granted and always express gratitude for use of another persons land. Offer your labor or game as repayment for the pri "eage of use. Remember you are helping

DISASSEMBLING



1- Loosen the screw in front of the forend to the reverse of clock direction and take off.

2- Also turn the screw with an allen key.



3- Dismantle the forend by pulling forward to the barrel end.

4- Before remove the barrel from the receiver, please enervate the ring with your special key.



5- Turn the switch to the lower position at this point

6- Dismantle the barrel by pulling forward to the barrel end.



7- Remove the stock after taking the screw off. (special tool needed)

8- Slide the upper receiver forward to remove

SAFETY



9 -This gun is designed as fully manual operating. According to the laws Mechanism can not be lock at the back position. It can be holded manually.

10-Make your shotgun safe by pushing the safety latch on the trigger guide on the left side. Be sure that the RED colour is not seen.

LOADING



11- Remove the magazine by pushing the button on top of the magazine. Push the shells inside of the magazine.

12- Repeat the operation up to magazine capacity. Take care to replace suitable cartridges according to its chamber 70mm(2" 3/4) or 76mm(3"). You can see this specification on left side of your barrel and in the owners manual. Please do not use magnum ammunition if your shotgun is not 76mm(3") chambered.

USAGE



13- After filling the magazine pull the charge handle back and repeat every time before firing the gun as it is manual operating straight pull.

Caution : Make sure the gun is unloaded.



14- Dismantle the parts as it shows on the picture by pulling to the forward.



15- Place it back after cleaning.



16- Clean the inside and the out side with the same method. Take care to keep reverse the open sides of the rings.

17- Clean inside of the barrel with a ramrod Keep quite oiled the cleaned surfaces.



To assemble your shotgun again, please follow the steps on the disassembling page.

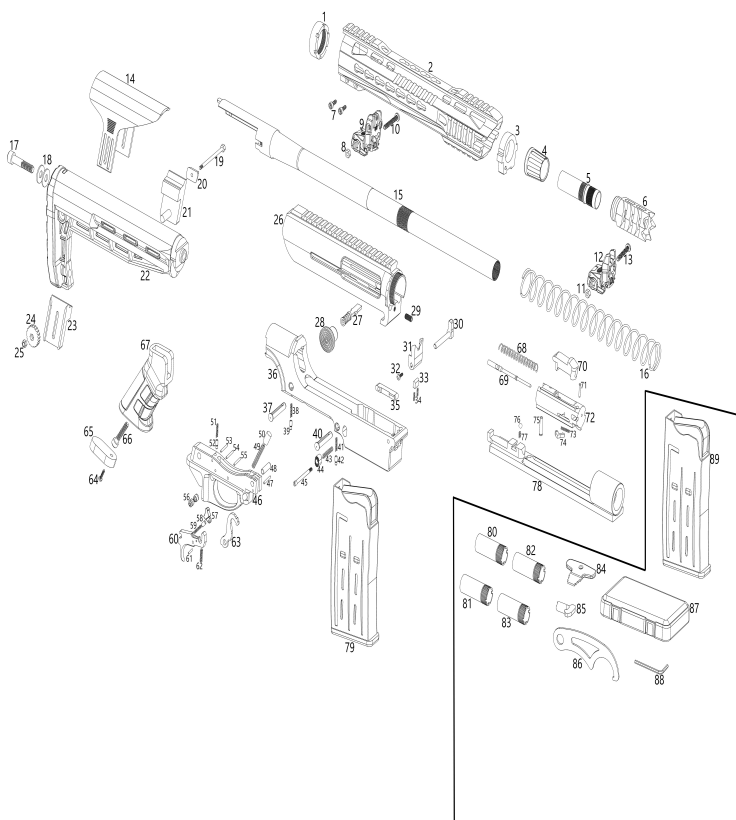
- Out of this operations your shotgun will not need more maintenance as user.
- If you need further detailed maintenance or repair get an authorised service.
- Shoot your shotgun after cleaning the protective lubricant.

Never fire your gun without choke tubes snugly tightened in barrels. Do not over tighten choke tubes. Wipe all exposed metal surfaces with an oiled cloth before storing. Do not squirt or pour oil into the inside mechanism because it may hamper proper functioning and will soak the wood. After extended periods of the action disassembled for professional cleaning and lubrication.

Care for your wood stock and forearm the same way you would a piece of furniture with the same finish.

SPARE PARTS

BLACK OPS STRAIGHT PULL



BLACK OPS STRAIGHT PULL

1	Barrel holding cap	46	Railing
2	Handguard	47	Railing pin
3	Handguard cap	48	Railing pin-2
4	Handguard holding cap	49	Spring, for hammer
5	Choke tube	50	Cap for hammer
6	Flame hide	51	Safety spring
7	Screw 2, for forearm *(2)	52	Safety pin
8	Back sight nut	53	Railing pin-3
9	Back sight	54	Railing pin-4
10	Back sight screw	55	Railing pin-5
11	Front sight nut	56	Safety
12	Front sight	57	Internal trigger
13	Front sight screw	58	Internal trigger cap
14	Face for sight	59	Internal trigger spring
15	Barrel	60	Trigger
16	Installation spring	61	Trigger pin
17	Case screw	62	Trigger spring
18	Case stamp*2	63	Hammer
19	Face for sight in screw	64	Screw, grips cap
20	Left nut Face for sight	65	Grips cap
21	Left cap Face for sight	66	Grips screw
22	Back stock	67	Grips
23	Right cap Face for sight	68	Spring, firing pin
24	Cap, for face for sight in screw	69	Firing pin firing pin
25	Nut, for face for sight in screw	70	Locking block
26	Case	71	Pin, extractor retaining
27	Setup handle	72	Bolt body
28	Casing setup handle	73	Extractor spring
29	Screw 1, for forearm	74	Extractor
30	Internal ramp handle	75	Pin, firing pin retaining
31	Shell ramp	76	Ball, setup handle
32	Internal ramp handle in screw	77	Slide arm spring
33	Ramp cam	78	Slide arm
34	Spring for Ramp cam *(2)	79	Magazine
35	Magazine lock	80	Choke tube number 2
36	Lower Receiver	81	Choke tube number 3
37	Back lower Receiver pin	82	Choke tube number 4
38	Part 37 retention spring	83	Choke tube number 5
39	Part 37 retention pin	84	Choke tube key
40	Front Lower Receiver pin	85	Key, Front sight
41	Part 40 retention spring	86	Key, Barrel holding cap
42	Part 40 retention pin	87	Choke box
43	Spring, magazine lock	88	Key removal forearm
44	Button magazine lock	89	Replacement magazine
45	Screw, magazine lock		

CHOKE TUBES USAGE

ASSEMBLING CHOKE TUBES

In multi choke models please take care not to shoot without the choke tubes supplied together with your shotgun. Choke tubes provide the shots to go out of the barrel messy or dense according to your hunt choice. Choke tubes are numerated with small notches. Shots go more messy out of the barrel according to this choke numbers from smaller to bigger. The table given below will be helpful for usage. While replacing the choke tubes, take care the notched end will be upside.



In multi choke models replace the choke tubes given together with your shotgun as the notch end will be upper side. Replace the choke tubes to the barrel by using choke key. Do not shoot without choke tubes in multi choke models. The choke notches must be upwards. After shooting dismantle the tubes with key given and clean the tubes and choke the wedge inside the magazine.



THE DEFINITION AND USAGE OF CHOKE TUBES

TS 870	PATTERN WITH LEAD SHOT	PATTERN WITH STEEL SHOT	MARK	KULLANIM ALANLARI / BEST IN THE AREA OF
4/4	★ FULL	Not Recommended	○	Waterfowling
3/4	★ ★ IMP MOD	FULL	○	Waterfowling
2/4	★ ★ ★ MOD	IMP MOD	○	Wildfowling (Hunting of Rabbit, partridge etc.)
1/4	★ ★ ★ IMP CYL	MOD	○	Wildfowling (Hunting of quail, partridge, wood pigeon, woodcock)
Cylinder	★ ★ ★ CYL	IMP CYL	○	Wildfowling (Hunting of big game by using slug shots and partridge etc.)

SYMBOLS IC Improved Cylinder, M Modified Choke, IM Improved Modified Choke, F Full Choke. *Choke Types are identified by index marks cut in the muzzle end of tubes as shown in the fourth column.

STORAGE

Clean thoroughly and oil your gun before storage. Store the gun in a case to prevent scratches and dents. Store in a dry place to prevent corrosion.

Any Legitimate purchaser of a **BERIKA®** gun is entitled, under the following conditions, to have it repaired free of charge (parts and labor) in the event of defects occurring that can be shown to be due to defective materials or manufacture.

This warranty is valid for two (2) years from the date of delivery of the product to its initial purchaser. The receiver is covered by a special warranty of ten (10) years from the date of delivery of the product to its initial purchaser. This warranty shall not cover wear and tear resulting from normal use of the gun or the coating of said receiver.

Under the terms of this warranty no other intervention will be accepted by **BERIKA®** or its distributors and in particular no indemnity will be paid for loss of use.

This warranty excludes any breakage of the wooden elements where such breakage is not due to an intrinsic defect of the wood.

This warranty shall only apply if, within the aforementioned period of three (3) or ten (10) years, the purchaser of the gun hands back or returns the allegedly defective gun to an official **BERIKA®** distributor at his/her own cost and risks within fifteen (15) days of said defect becoming apparent. The gun must be accompanied by a written description of the defect or defects and any other documents or cover establishing the place and date of the initial purchase (for example a copy of invoice).

This warranty will not apply where:

1. It is apparent that the alleged defect can reasonably be attributed to normal wear and tear of the gun, intentional damage, negligent maintenance, storage or use or to improper use (such as unsuitable or reloaded ammunition)

2. The gun has been converted or altered in any way.

Under the terms of this warranty, all repairs or replacements shall be affected within a reasonable time scale.

All repairs, with or without replacement of parts, must be performed using the correct equipment by an official **BERIKA®** distributor or **BERIKA®** approved service center.

The customer will be advised when the repaired or replacement gun is ready. It will either be held for collection or, if the customer so requests, can be delivered to his home address at his own risk and cost.

Any servicing or repair work carried out under the terms of this warranty shall not extend the warranty period or alter the conditions thereof. However, the repair itself will be guaranteed for a period of one (1) year from the date the repaired gun becomes available.

In the event that the gun is replaced with a new one, the full warranty shall begin, to apply from the moment the replacement gun is handed to the customer.

Custom gunsmithing service or nonstandard alterations are NOT AVAILABLE from **BERIKA®** factory.

WARNING: Before shipping any firearm, be absolutely certain that it is unloaded. Do not ship cartridges with a firearm.

Note :.....

[illegible]

THANK YOU

Thank you for purchasing a Berika® shotgun. We are sure this gun will bring you years of hunting and/or shooting pleasure. Your satisfaction is the key to our success.

Please let us know if we can be of service and please relay any observations about your gun's performance or appearance.

PRODUCT ID.

Type	:	
Brand	:	BERIKA®
Serial Nr.	:	
Model	:	
Barrel length	:	
Caliber	:	
Date and Place of Delivery	:	
Maximum period of free repair	:	30 days
Guarantee period	:	

Seller Company

Date and Number of the Invoice

.../.../.... *****

Signature - Seal

--



BE COURTEOUS

When shooting or hunting always acquire the permission of the landowner. Respect the land. Do not litter, use gates when possible, leave open and closed gates closed. Drive vehicles only where advance permission has been granted any always express gratitude for use of another persons land. Offer your labor or game as repayment for the privilege of use. Remember you are helping develop a reputation for all sportsmen/sportswomen.



ARMAS SİLAH SANAYİ VE DIŞ TİCARET

Tahıl pazarı Mah. Şarapçı

Cad. Tugayoğlu İş Merkezi Kat:3

No:15 Muratpaşa/Antalya/TURKEY

Tel : +90 242 408 0880

www.berika.com.tr