



**SEMI AUTOMATIC / INERTIA SYSTEM SHOTGUN
INSTRUCTION MANUAL
&
CERTIFICATE OF WARRANTY**

**READ THE INSTRUCTIONS AND
WARNINGS IN THIS MANUAL CAREFULLY
BEFORE USING THIS FIREARM**

SAFETY RULES

1. RULE: ALWAYS KEEP THE MUZZLE POINTED IN A SAFE DIRECTION. NEVER POINT A FIREARM AT SOMETHING THAT IS NOT SAFE TO SHOOT!

No one will be injured by an accidental discharge if you keep your firearm pointed in a safe direction. It's as simple as that.

2. RULE: FIREARMS SHOULD BE UNLOADED WHEN NOT ACTUALLY IN USE.

Remember, it is your responsibility to make sure that children and others unfamiliar with firearms cannot get access to your firearms and ammunition.

3. RULE: DON'T RELY ON YOUR GUN'S SAFETY. SAFETY DEVICES ARE NOT A SUBSTITUTE FOR SAFE HANDLING PROCEDURES.

4. RULE: BE SURE OF YOUR TARGET AND WHAT'S BEYOND IT. NEVER SHOOT AT WATER OR AT A HARD SURFACE.

Remember, bullets can travel great distances with tremendous velocity. Know how far your shot will go if you miss your target or the bullet ricochets. If you miss your target or if the bullet penetrates the target, it is your responsibility to ensure that the shot does not cause unintended injury or damage.

5. RULE: USE PROPER AMMUNITION. ONLY USE FACTORY-LOADED, NEW AMMUNITION MANUFACTURED TO INDUSTRY SPECIFICATIONS: CIP (EUROPE AND ELSEWHERE), SAAMI (USA). BE CERTAIN THAT EACH ROUND YOU USE IS IN THE PROPER CALIBER OR GAUGE AND TYPE FOR THE PARTICULAR FIREARM.

Every firearm is designed to use a certain caliber or gauge of ammunition. Using the wrong ammunition, mixing ammunition or using improperly reloaded ammunition can cause serious personal injury or death. And it only takes one cartridge or shotshell of the incorrect caliber or gauge, or which has been improperly reloaded to destroy your firearm.

Likewise, you'll find the caliber or gauge of your **BERIKA** firearm imprinted on the barrel.

RELOADING REQUIRES EXTRA DILIGENCE

The first rule of reloading is to always follow the manufacturer's instructions for the components you're using.

Dangerously high pressure and explosions can result from an overcharge of powder, use of the wrong powder,

incorrect shot selection or other deviations from established reloading guidelines. Be very careful.

6. RULE: LEAD WARNING

Discharging firearms in poorly ventilated areas, cleaning firearms or handling ammunition may result in exposure to lead and other substances known to cause birth defects, reproductive harm, and other serious physical injury. Have adequate ventilation at all times. Wash hands thoroughly after exposure (i.e. **MAINTENANCE**).



7. RULE: IF YOUR GUN FAILS TO FIRE WHEN THE TRIGGER IS PULLED, HANDLE WITH CARE!

8. RULE: ALWAYS WEAR EYE AND EAR PROTECTION WHEN SHOOTING.

9. RULE: BE SURE THE BARRELS CLEAR OF OBSTRUCTIONS BEFORE SHOOTING.

10. RULE: DON'T ALTER OR MODIFY YOUR GUN AND HAVE IT SERVICED REGULARLY.

Proper cleaning and lubrication are also important to firearm maintenance and are necessary to assure accuracy, safety and reliability.

Remember, you are responsible for the proper care and maintenance of your firearm. Failure to properly maintain your firearm can not only damage or ruin your firearm, it can expose you and others to unnecessary risks of personal injury or death.

There are a wide range of firearm care products and resources on the market to help you get the best results cleaning your gun. Everything from solvents and lubricants to rods and patches. They're all available from your dealer.

11. RULE: LEARN THE MECHANICAL AND HANDLING CHARACTERISTICS OF THE FIREARM YOU ARE USING.

Before you even unpack your new **BERIKA** firearm, read the instruction manual from cover to cover and familiarize yourself with the different component parts of the gun. Then read, understand and follow the 13 rules of safety in this booklet.

12. RULE: SHOOT SOBER!

Alcohol, drugs and guns are a deadly combination. Never consume anything that would even mildly impair your judgment or physical coordination when you're using a firearm. A staggering percentage of the shooting accidents that occur every year involve alcohol or drugs. Be smart. Shoot sober and stay alive.

13. GENERAL RULE:

Let common sense rule. Learn your official and unofficial responsibilities.

Please visit our web page for more details ;

www.berika.com.tr



INTRODUCTION TO BERIKA

For many years, Berika has been associated with the gun industry. After the word with modern technology and you have a product of true value and affordable quality. You have Berika.

We at Berika thank you for the privilege of delivering a product to you that will provide you with years of pleasurable use. Happy shotgunning.

ABOUT YOUR SEMI-AUTOMATIC SHOTGUN

Your Berika shotgun is gas operated. The gas created from firing a live shotshell operates the action.

Once the first shell has been fired, the next shell in the magazine will automatically cycle into the chamber, and this cycle will continue (each time the trigger is pulled) until all shells loaded in the magazine have been fired. The bolt will remain locked in the open position after the last shell is fired.

The technologically advanced gas metering system allows you to shoot 2 3/4" and 3" shells interchangeably with any ammunition of the proper gauge for your shotgun with flawless performance.

This and other fine features ensure that your shotgun will be a source of pride and pleasure for years to come. For 3 1/2" models the metering system allows you to shoot heavy 2 3/4", 3", and 3 1/2" shells interchangeably.

ABOUT YOUR INERTIA SYSTEM SHOTGUN

Berika Inertia is the original version of the best operating system ever devised.

The proven system is ;

Reliable : No adjusting, Consistent, reliable cycling, year after year, Handles light field loads to 3-1/2- inch magnums

Simple : Just 3 main parts: bolt body, inertia spring, and rotating bolt head

Clean : Gas, smoke and burnt powder remain in the barrel, Residue doesn't enter the gun's mechanism, Remains cleaner than gas systems

Strong : Steel locking lugs on a rotating bolt head, Bolt head locks steel-to- steel with the barrel, Lock becomes even tighter during firing

Fast : Smaller mass of parts, Quicker than other operating systems,

Low Maintenance : Operates more cleanly than gas-system guns, Less time required for cleaning
Perfectly Balanced : Balances as a fine game gun should, No heavy components under the forend

BE COURTEOUS

When shooting or hunting always acquire the permission of the landowner. Respect the land. Do not litter, use gates when possible, leave open gates open and closed gates closed. Drive vehicles only where advance permission has been granted and always express gratitude for use of another person's land. Offer your labor or game as repayment for the privilege of use. Remember you are helping



ASSEMBLING



- 1- Loosen the screw in front of the forend to the reverse of clock direction and take of.
2- Dismantle the forend by pulling forward to the barrel end.



- 3- Before assembling the barrel to the receiver, please place the forend to the ring under the barrel.
4- By fixing the barrel back to the case and forend to the magazine tube, assemble the barrel together with forend.



- 5- While assembling the barrel pull back the bolt handle to the middle to replace the barrel correctly and completely as seen in the figure. Unless the barrel will not fit completely.
6- Tighten the screw back as reverse operation of process 1.



- 7- Pull the cocking lever/bolt handle back. Mechanism will stay there.



SAFETY



8- Push the bolt release button on the right side of case. Mechanism will slide strongly forward. **WARNING!!** Be careful not to place your hand thru the way of the mechanism while sliding. Keep your hand as seen in the figure.

9- Make your shotgun safe by pushing the safety latch on the trigger guide on the left side. Be sure that the RED colour is not seen.

LOADING



10- Replace the cartridges as the metal end has to be backward in to magazine by pushing inside the carrier till hearing the locking click or till the cartridge is not seen. Repeat the operation up to magazine capacity. Take care to replace suitable cartridges according to its chamber 70mm(2" 3/4) or 76mm(3"). You can see this specification on left side of your barrel and in the owners manual. Please do not use magnum ammunition if your shotgun is not 76mm(3") chambered.

11- After filling the magazine push the cartridge drop lever (small latch at the back of carrier) you will see the cartridge dropping on the carrier.

USAGE



12- Pull the bolt handle back. Mechanism will be kept at the back. Push the bolt release button as seen in figure 8. While the bolt is sliding forward strongly carrier will let the cartridge in front of the bolt and the bolt will lock the cartridge in the chamber. Do not catch the bolt handle while sliding forward. Unless the locking will not be done. One cartridge of the magazine capacity is chambered now. You can now replace another cartridge in to the magazine instead of chambered one. Thus the capacity of your shotgun will be filled. (4+1 or 7+1) Open the safety latch by pushing from the right side. You will see the red colour. Take care not to pull the trigger during this time. Now your shotgun is ready to fire. When you fire, your shotgun will automatically throw out the fired cartridge and replace one from the magazine.



UNLOADING THE MAGAZINE TUBE

Do not keep your shotgun loaded out of shooting and hunting area. After shooting or hunting is charge your shotgun.



13- To discharge the cartridge in the chamber, pull back the bolt handle.

14- Mechanism will throw the cartridge out while sliding back



15- Push the carrier at bottom of the case inside and meantime push the bolt release button once and leave.

16- Cartridge will drop down to your finger on the carrier, take off the cartridge. Repeat this operation until the cartridges finish in the magazine.

DISASSEMBLING



17- Loosen the screw in front of the forend to the reverse of clock direction and take of.

18- Dismantle the forend and the barrel by pulling forward together.



19-You can dismantle and clean the shotgun as shown on the picture.



MAINTENANCE AND CLEANING

Caution : Make sure the gun is unloaded.



20- Dismantle the piston.



21- Push the latch under the trigger group (figure 11/cartridge drop lever). Pull back the bolt handle. Clean the outer surface of chamber with a gland and keep oiled after shooting.



22- Clean the inside and the outer side of the piston with same method. Take care to keep reverse the open sides of rings which are out of the piston.



23- Open the holes with a string in the gas room on the bottom of barrel. Clean inside of gas room. Loosen the choke tube and clean the choke and choke bearing. Clean inside of the barrel with a ramrod. Keep quite oiled the cleaned surfaces and by pushing bolt release button while keeping the bolt handle and slide the bolt slowly to the end. If you slide the bolt fast it can damage the case.

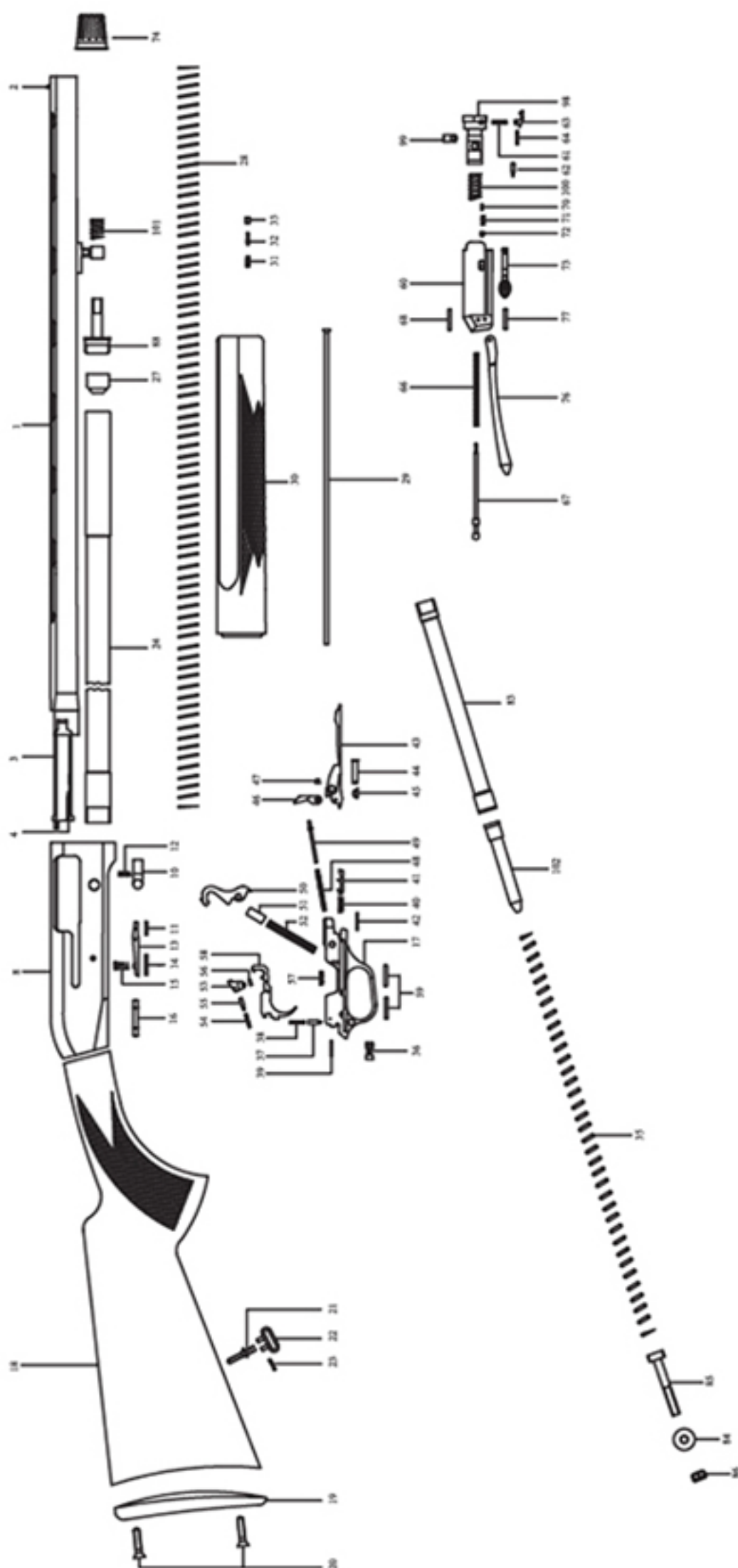
24-To assemble your shotgun again as processes 22,21,20 attach the parts in following order spring and piston. Remember the processes 4,5,6 assembling barrel and forearm.

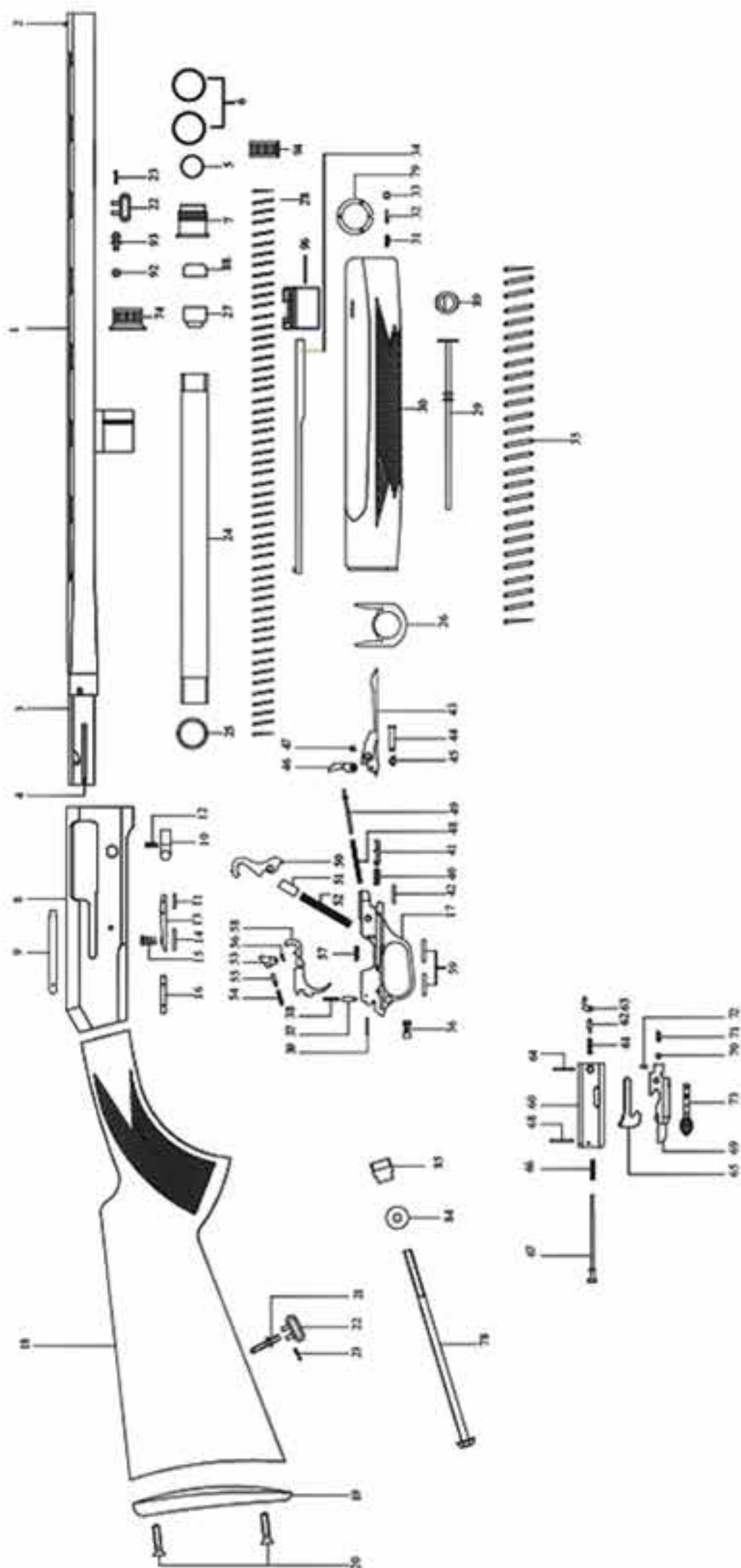
- Out of this operations your shotgun will not need more maintenance as user.
- If you need further detailed maintenance or repair get an authorised service.
- Shoot your shotgun after cleaning the protective lubricant.

Never fire your gun without choke tubes snugly tightened in barrels. Do not over tighten choke tubes. Wipe all exposed metal surfaces with an oiled cloth before storing. Do not squirt or pour oil into the inside mechanism because it may hamper proper functioning and will soak the wood. After extended periods of the action disassembled for professional cleaning and lubrication.

Care for your wood stock and forearm the same way you would a piece of furniture with the same finish.







PARTS LIST

P.No.	PART NAME	P.No.	PART NAME	P.No.	PART NAME	P.No.	PART NAME
1	BARREL	29	MAGAZINE PLUG	57	TRIGGER SPRING	85	STOCK BOLT RECEIVER
2	FRONT BEAD	30	FOREARM	58	TRIGGER	86	STOCK BOLT RING
3	BEARING BOLT	31	MAGAZINE CAP SPRING	59	TRIGGER PIN	87	STOCK BOLT SCREW
4	EJECTOR	32	MAGAZINE CAP PIN	60	BREECH BOLT	88	MAGAZINE SPRING RETAINER
5	RUBBER GAS RING	33	MAGAZINE CAP SCREW	61	EXTRACTOR SPRING	89	MAGAZINE PLUG RETAINER
6	GAS PISTON WASHER	34	ACTION BAR	62	EXTRACTOR SPRING PIN	90	PLUG PLATE
7	GAS PISTON	35	ACTION SPRING	63	EXTRACTOR	91	MAGAZINE CAP INTERIOR
8	RECEIVER	36	SAFETY	64	EXTRACTOR RETAINING PIN	92	SWIVEL STUD RETAINER
9	TRACER WEDGE	37	SAFETY PULLER	65	LOCKING BLOCK	93	SWIVEL STUD
10	BOLT RELEASE	38	SAFETY SPRING	66	FIRING PIN SPRING	94	SUPPORTER NUT
11	BOLT RELEASE PIN	39	SAFETY SPRING PULLER	67	FIRING PIN	95	BARREL MOVEMENT SPRING
12	BOLT RELEASE SPRING	40	CARRIER SPRING	68	FIRING PIN RETAINER	96	ACTION BAR SLEEVE
13	BOLT RELEASE LATCH	41	CARRIER PULLER	69	BOLT BLOCK	97	BARREL SPRING RETAINING NUT
14	BOLT RELEASE LATCH PIN	42	CARRIER RETAINING PIN	70	BOLT LEVER BLOCK PIN	98	LOCKING HEAD
15	BOLT RELEASE LATCH SPRING	43	CARRIER	71	BOLT LEVER BLOCK SPRING	99	LOCKING HEAD PIN
16	TRIGGER GUARD PIN	44	TRIGGER ASSEMBLY PIN SLEEVE	72	BOLT LEVER BLOCK SPRING PIN	100	LOCKING HEAD SPRING
17	TRIGGER GUARD	45	TRIGGER ASSEMBLY PIN RETAINER	73	OPERATING HANDLE	101	MAGAZINE CAP SPRING
18	STOCK	46	CARRIER DOG	74	MAGAZINE CAP	102	RECOIL SPRING WEIGHT
19	BUTT PLATE	47	CARRIER DOG PIN	75	ACTION PIPE		
20	BUTT PLATE SCREW	48	CARRIER DOG SPRING	76	ACTION SUPPORTER		
21	STOCK SWIVEL STUD	49	CARRIER DOG PULLER	77	ACTION SUPPORTER PIN		
22	SWIVEL	50	HAMMER	78	STOCK BOLT		
23	SWIVEL SCREW	51	HAMMER PULLER	79	MAGAZINE CAP SUPPORT		
24	MAGAZINE TUBE	52	HAMMER SPRING	80	7+1 SWIVEL		
25	FOREARM SUPPORT RING	53	SEAR	81	7+1 MAGAZINE CAP		
26	FOREARM PLATE RING	54	SEAR SPRING	82	SWIVEL HOLDER		
27	MAGAZINE FOLLOWER	55	SEAR PULLER	83	ACTION TUBE		
28	MAGAZINE SPRING	56	SEAR PIN	84	STOCK BOLT WASHER		



CHOKE TUBES USAGE

ASSEMBLING CHOKE TUBES

In multi choke models please take care not to shoot without the choke tubes supplied together with your shotgun. Choke tubes provide the shots to go out of the barrel messy or dense according to your hunt choice. Choke tubes are numerated with small notches. Shots go more messy out of the barrel according to this choke numbers from smaller to bigger. The table given below will be helpful for usage. While replacing the choke tubes, take care the notched end will be upside.



In multi choke models replace the choke tubes given together with your shotgun as the notch and will be upper side. Replace the choke tubes to the barrel by using choke key. Do not shoot without choke tubes in multi choke models. The choke notches must be upwards. After shooting dismantle the tubes with key given and clean the tubes and choke the wedge inside the magazine.



THE DEFINITION AND USAGE OF CHOKE TUBES

TS 870	PATTERN WITH LEAD SHOT		PATTERN WITH STEEL SHOT	MARK	KULLANIM ALANLARI / BEST IN THE AREA OF
4/4	★	FULL	Not Recommended	○	Waterfowling
3/4	★ ★	IMP MOD	FULL	○	Waterfowling
2/4	★ ★ ★	MOD	IMP MOD	○	Wildfowling(Hunting of rabbit, partridge etc.)
1/4	★ ★ ★ ★	IMP CYL	MOD	○	Wildfowling(Hunting of quail, freckled partridge, wood pigeon and woodcock)
Cylinder	★ ★ ★ ★ ★	CYL	IMP CYL	○	Wildfowling(Hunting of big game by using slug shots and partridge hunting etc.)

SYMBOLS IC Improved Cylinder, M Modified Choke, IM Improved Modified Choke, F Full Choke. *Choke Types are identified by index marks cut in the muzzle and of tubes as shown in the fourth column.

ASSEMBLING WEDGE

The capacity of the shotgun that you own can be 4+1 or 7+1 But your shotgun is delivered to you as 2+1. Consumer can change the capacity of the shotgun by assembling and dismantling the wedge inside the magazine.

STORAGE

Clean thoroughly and oil your gun before storage. Store the gun in a case to prevent scratches and dents. Store in a dry place to prevent corrosion.



WARRANTY POLICY

Any Legitimate purchaser of a **BERIKA** gun is entitled, under the following conditions, to have it repaired free of charge (parts and labor) in the event of defects occurring that can be shown to be due to defective materials or manufacture.

This warranty is valid for three (3) years from the date of delivery of the product to its initial purchaser. The receiver is covered by a special warranty of ten (10) years from the date of delivery of the product to its initial purchaser. This warranty shall not cover wear and tear resulting from normal use of the gun or the coating of said receiver.

Under the terms of this warranty no other intervention will be accepted by **BERIKA** or its distributors and in particular no indemnity will be paid for loss of use.

This warranty excludes any breakage of the wooden elements where such breakage is not due to an intrinsic defect of the wood.

This warranty shall only apply if, within the aforementioned period of three (3) or ten (10) years, the purchaser of the gun hands back or returns the allegedly defective gun to an official **BERIKA** distributor at his/her own cost and risks within fifteen (15) days of said defect becoming apparent. The gun must be accompanied by a written description of the defect or defects and any other documents or cover establishing the place and date of the initial purchase (for example a copy of invoice).

This warranty will not apply where:

1. It is apparent that the alleged defect can reasonably be attributed to normal wear and tear of the gun, intentional damage, negligent maintenance, storage or use or to improper use (such as unsuitable or reloaded ammunition)

2. The gun has been converted or altered in any way.

Under the terms of this warranty, all repairs or replacements shall be affected within a reasonable time scale.

All repairs, with or without replacement of parts, must be performed using the correct equipment by an official **BERIKA** distributor or **BERIKA** approved service center.

The customer will be advised when the repaired or replacement gun is ready. It will either be held for collection or, if the customer so requests, can be delivered to his home address at his own risk and cost.

Any servicing or repair work carried out under the terms of this warranty shall not extend the warranty period or alter the conditions thereof. However, the repair itself will be guaranteed for a period of one (1) year from the date the repaired gun becomes available.

In the event that the gun is replaced with a new one, the full warranty shall begin, to apply from the moment the replacement gun is handed to the customer.

Custom gunsmithing service or nonstandard alterations are NOT AVAILABLE from **BERIKA** factory.

WARNING: Before shipping any firearm, be absolutely certain that it is unloaded. Do not ship cartridges with a firearm.



Note :

THANK YOU

Thank you for purchasing a Berika shotgun. We are sure this gun will bring you years of hunting and/or shooting pleasure. Your satisfaction is the key to our success.

Please let us know if we can be of service and please relay any observations about your gun's performance or appearance.

PRODUCT ID.

<i>Type</i>	:	
<i>Brand</i>	:	BERIKA
<i>Serial Nr.</i>	:	
<i>Model</i>	:	
<i>Barrel length</i>	:	
<i>Caliber</i>	:	
<i>Date and Place of Delivery</i>	:	
<i>Maximum period of free repair</i>	:	30 days
<i>Guarantee period</i>	:	

Seller Company

.....

Date and Number of the Invoice

.../.../.... ..

Signature - Seal

--



BE COURTEOUS

When shooting or hunting always acquire the permission of the landowner. Respect the land. Do not litter, use gates when possible, leave open and closed gates closed. Drive vehicles only where advance permission has been granted any always express gratitude for use of another persons land. Offer your labor or game as repayment for the privilege of use. Remember you are helping develop a reputation for all sportsmen/sportswomen.



Tahılpazarı Mah.Şarampol
Cad.Tugayoğlu İş Merkezi Kat:3
No:15 Muratpaşa/Antalya/TURKEY
Tel : +90 242 408 0880
www.berika.com.tr